

# ***DON'T BE WITHOUT A REPLACEMENT IRRIGATION TUBE***

**ITEM # DB-001 “One-Time” Use**  
**Disposable Irrigation Tube**

- **\$10** per 1ea DB-001
- **\$200** per Box of 20 #DB-001 tubes
- Minimum Order: \$40.00 or More



**ITEM # DB-003 Can be used up to 20 times**  
**Autoclavable Irrigation Tube**

- **\$70** per 1ea DB-003
- **\$1,400** per Box of 20 #DB-003 tubes



**ITEM # MOSLV-001**  
**Surgical Motor Sleeve**

- **\$80** per Box of 24 #MOSLV-001 Motor Sleeves
- Disposable plastic cover that protects dental surgical motors
- One size fits all motors



**ITEM # LSC-001**  
**Lubricating Spray Can**

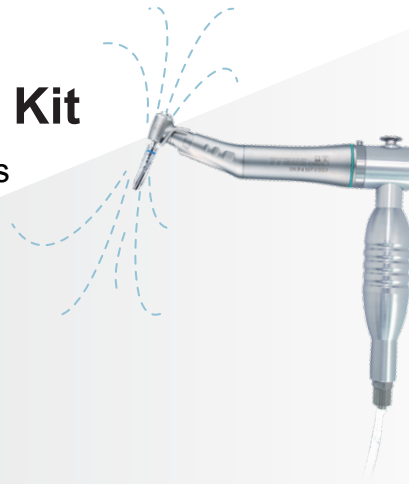
- **\$30** per 1ea LSC-00
- **\$90** per Box of 3 Spray Can
- Lubricating Oil Spray works to extend life of handpieces and ensure maximum product performance



ITEM # **SMPLS-Kit**

## SIMPLIS Lubricating Tool Kit

- Simply & More Effectively cleans and oils handpiece with air pressure
- Extends the life of handpiece
- Works on ANY Handpiece angle
- **\$300** per Kit



**SIMPLIS Full Kit**  
**\$330** with Lubricating  
Spray Can included

## Motor&Angle Maintenance Instruction

### 1 HOW TO CLEAN

- **DO** : Within 5 minutes after surgery.
- **DO NOT** : Use saline solution for cleaning.

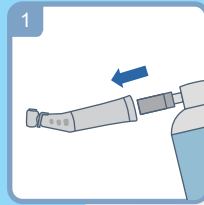


- Rotate the head in alcohol or water for 5 seconds.

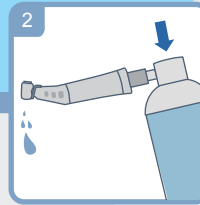


- Wipe down the handpiece with a damp disposable cloth.

### 2 HOW TO LUBRICATE



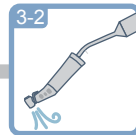
- Insert the spray nozzle into the handpiece



- Spray until the oil coming out of the handpiece is clear.



- Stand the handpiece upright on a cloth or napkin to let it air dry

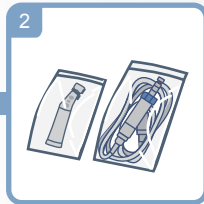


- For Quicker Drying inside Handpiece:  
Remove remaining liquid with gentle air spray.

### 3 HOW TO STERILIZE

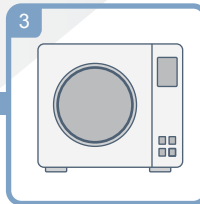


- Clean the oil on the outer surface of the handpiece.



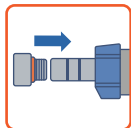
- Place the handpiece in a sterilization pouch.

**4 minutes at 132°C**

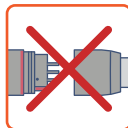


- Sterilize for **4 minutes at 132°C** in Autoclave, and let it completely **dry** for 30 minutes after autoclave.

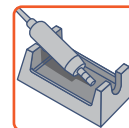
### \* MOTOR



Before placing the motor in the autoclave, make sure to assemble the motor cap on the motor.



Do not disassemble the motor from the motor cord when sterilizing.



After the autoclave, put the motor tilted on the handpiece cradle as shown on the left.